

## Windows 2000 Professional

Nikon Capture 2 (Ver. 2.0.2 Updater)

**This manual is for those users of D1 series cameras who are running Windows 2000 Professional, and are updating to Nikon Capture 2 (Ver. 2.0.2).**

# For Windows 2000 Professional Users

## Registering the Camera under Windows 2000 Professional

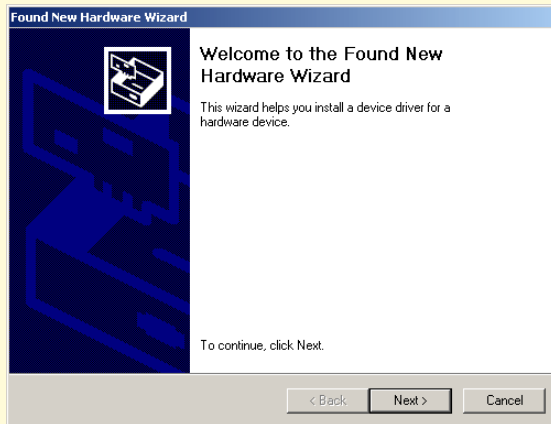
Before you will be able to use your D1, D1X, or D1H digital camera with Nikon Capture 2, you must complete the device registration procedure. If you have already registered the camera for use with Nikon View 4 or will not be connecting the camera to the computer, you will not need to register the camera now. See Nikon Capture User's Manual page 16 for further details.

### Step 1

After installing Nikon Capture ver. 2.0.2, turn the camera on, make sure that the mode dial is set to PC, and then connect the camera to the computer using an IEEE 1394 cable.

### Step 2

The opening dialog for the Found New Hardware Wizard will be displayed. Click **Next**.



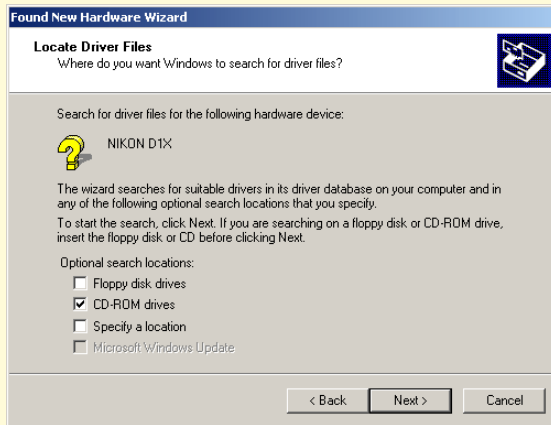
### Step 3

Select the search option and click **Next**.



## Step 4

Holding down the shift key to prevent the Welcome dialog from opening automatically, insert the Nikon Capture 2 CD into the CD-ROM drive. Select **CD-ROM drives** and click **Next**.

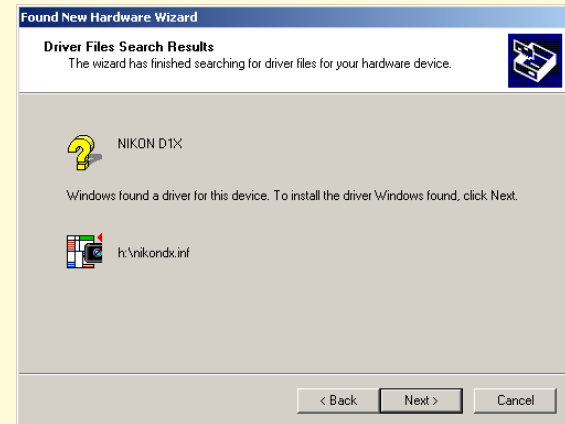


If the Welcome dialog appears when the CD is inserted in the drive, close the dialog by clicking the **Quit** button.

## Step 5

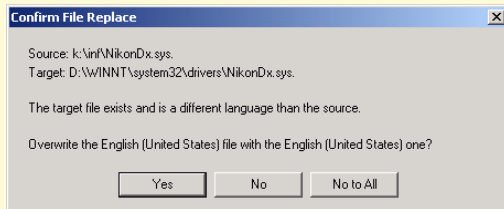
The dialog shown below will be displayed; click **Next**.

If the message, "Windows was unable to find a suitable driver for this device," is displayed, this may indicate that the Nikon Capture 2 CD was not correctly inserted in the CD-ROM drive or that the correct search location was not specified. Click **Back** to return to the dialog shown in Step 4, where you can confirm that the correct location has been specified.



## Step 6

When the installation starts, the **Confirm File Replace** dialog will be displayed. Make sure you click **No**.



The required system drivers were automatically installed when you updated Nikon Capture to version 2.0.2; this means that the required drivers are already present on the hard disk. Make sure you click **No** to use these drivers.

## Step 7

When the installation of the drivers has finished, the dialog shown below will be displayed; click **Finish** to close the dialog box.



## Step 8

Registration should now be complete; refer to page 41 of the Nikon Capture 2 manual (starting at Step 7) to check that the camera has been correctly registered with the system.